

# Electron Microscopy Centre Amsterdam

## Available Techniques:

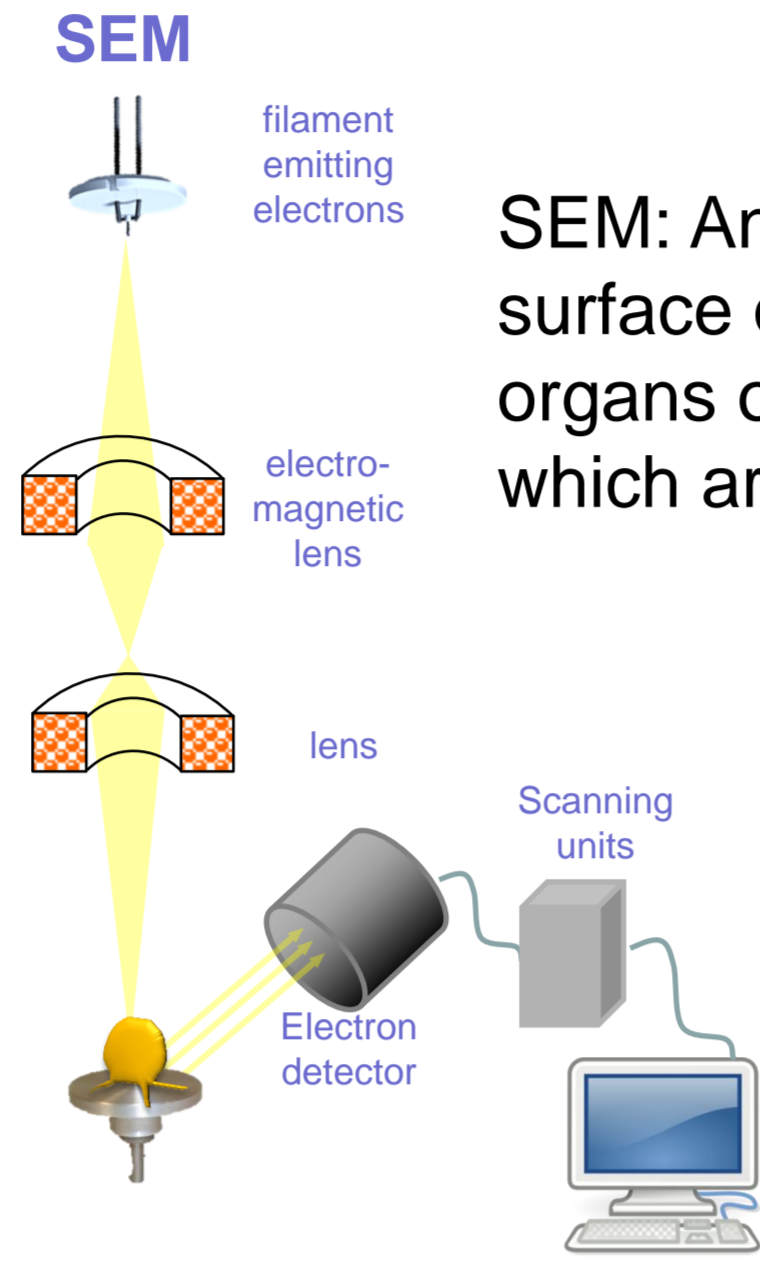


core facility  
Cellular Imaging



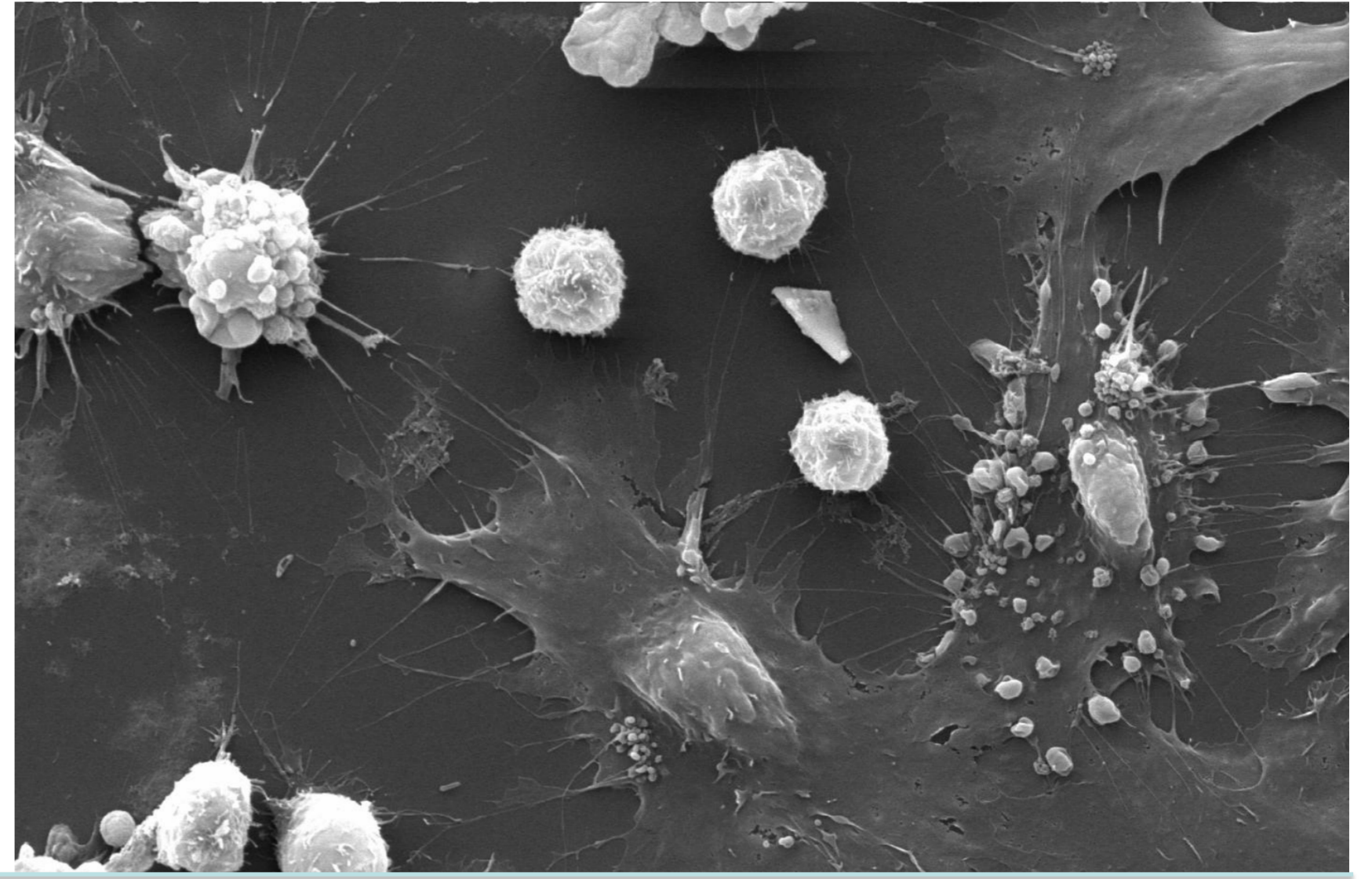
### Introduction technique:

SEM;  
Scanning electron microscopy

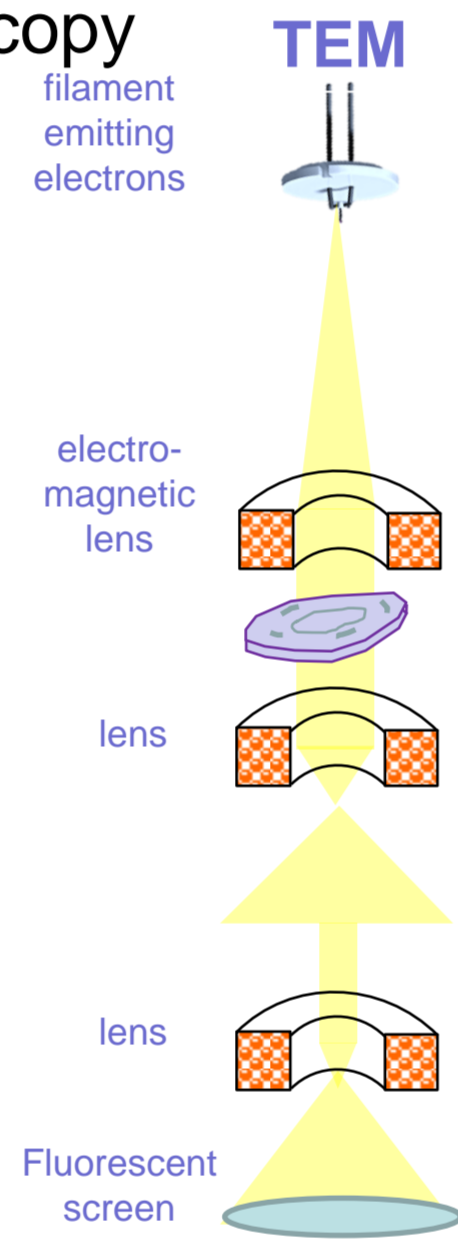
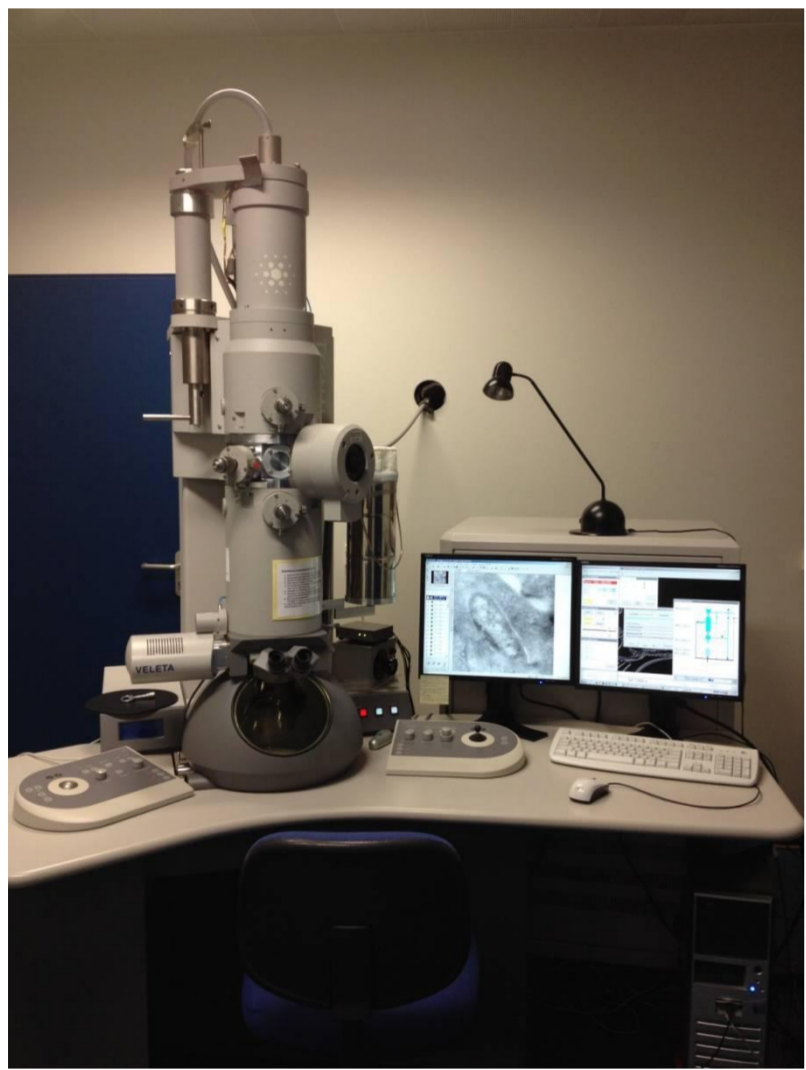


SEM: Analysis of the surface of cells, tissues, organs or organisms which are metal coated

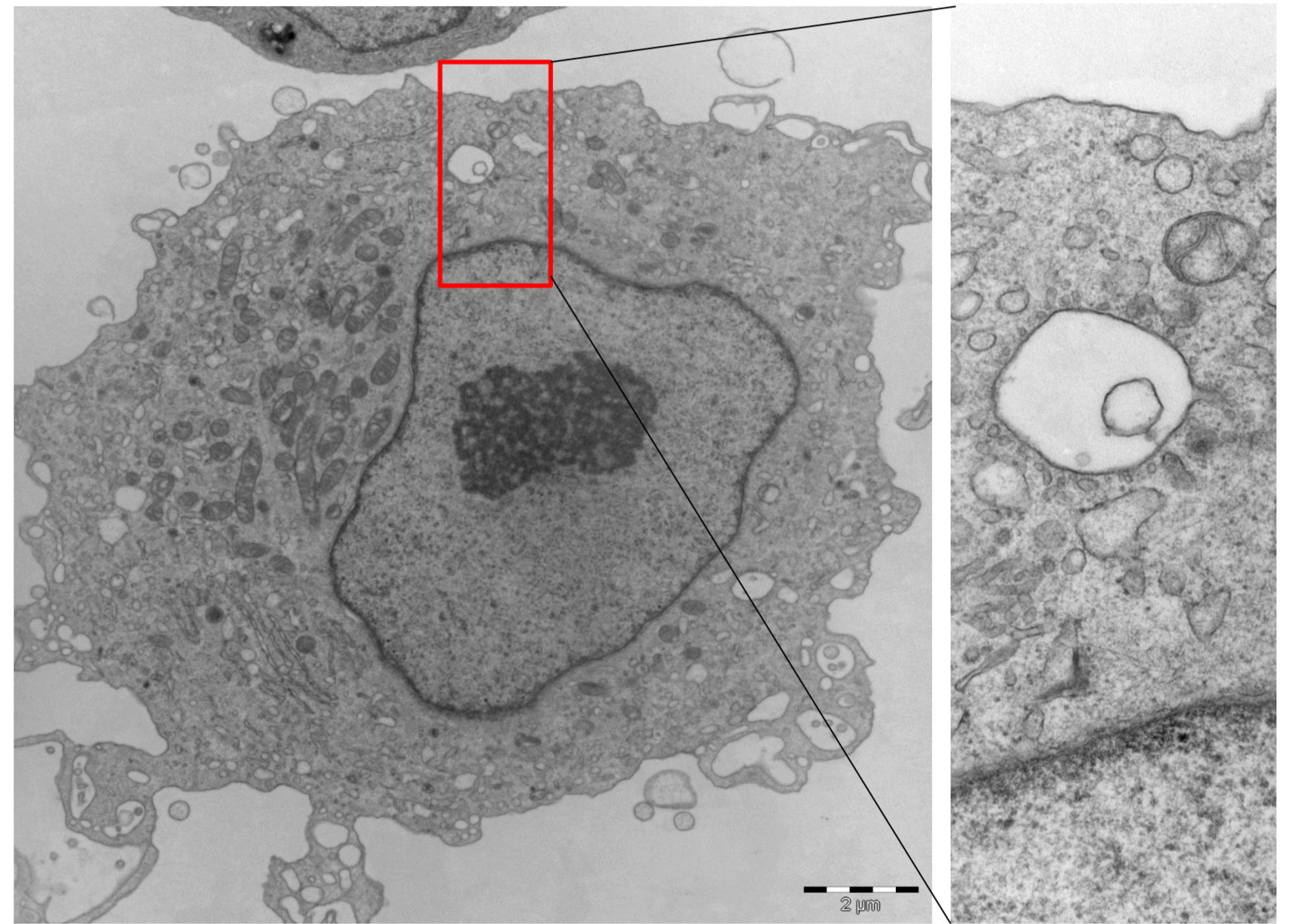
### Examples:



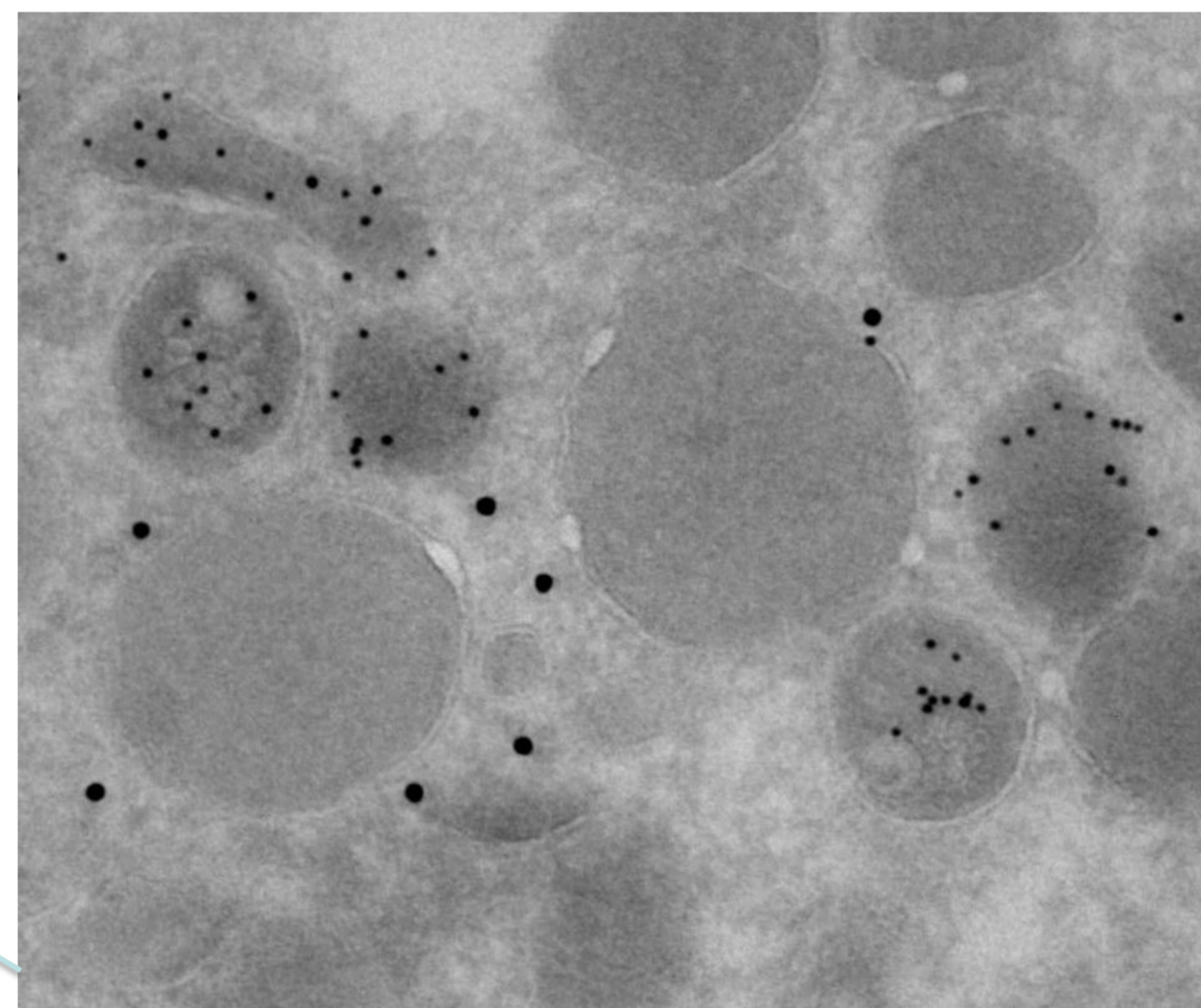
TEM;  
transmission electron microscopy



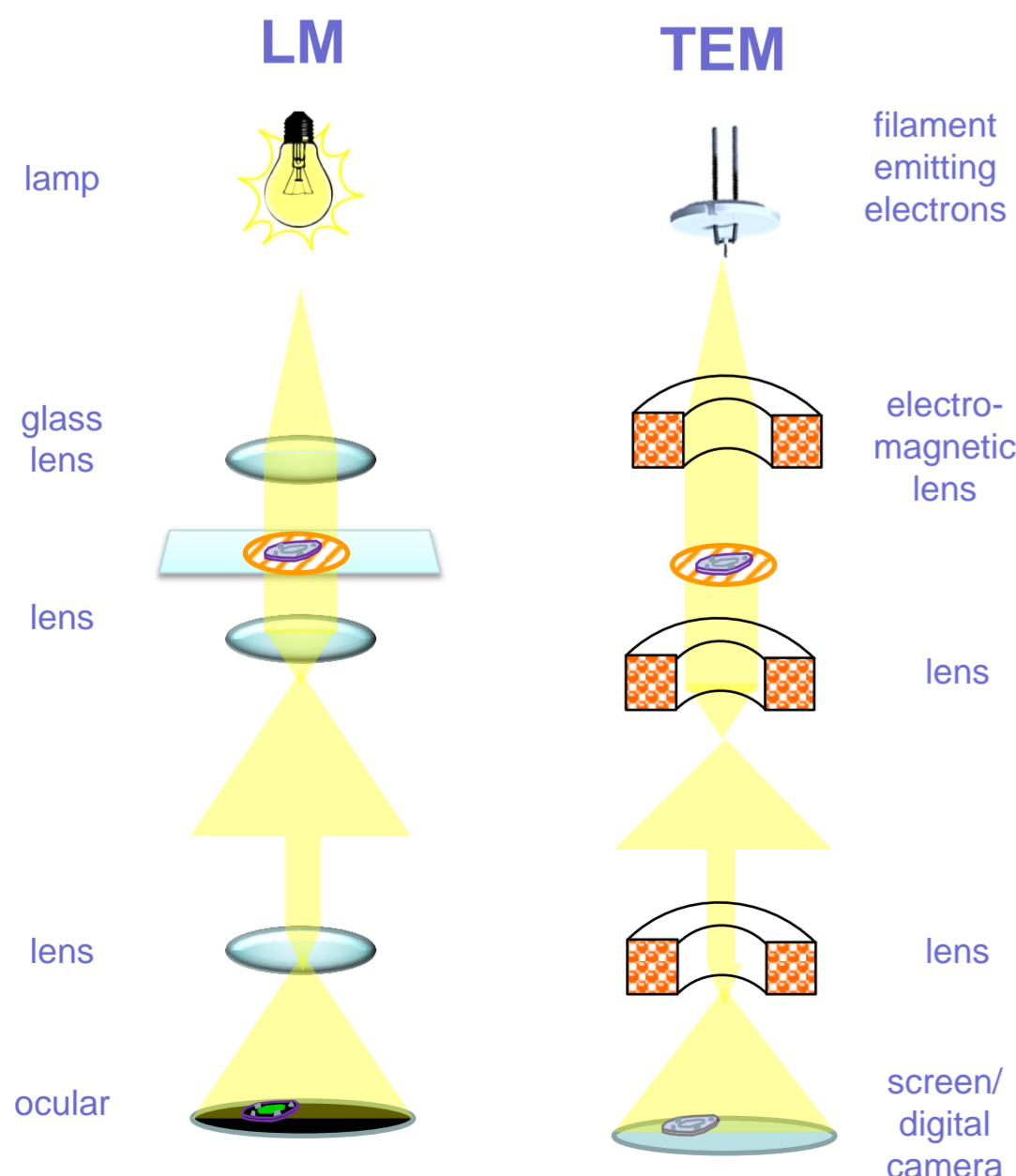
Analysis of ultrastructure of cells and tissues which are metal stained and plastic embedded to cut ultrathin sections



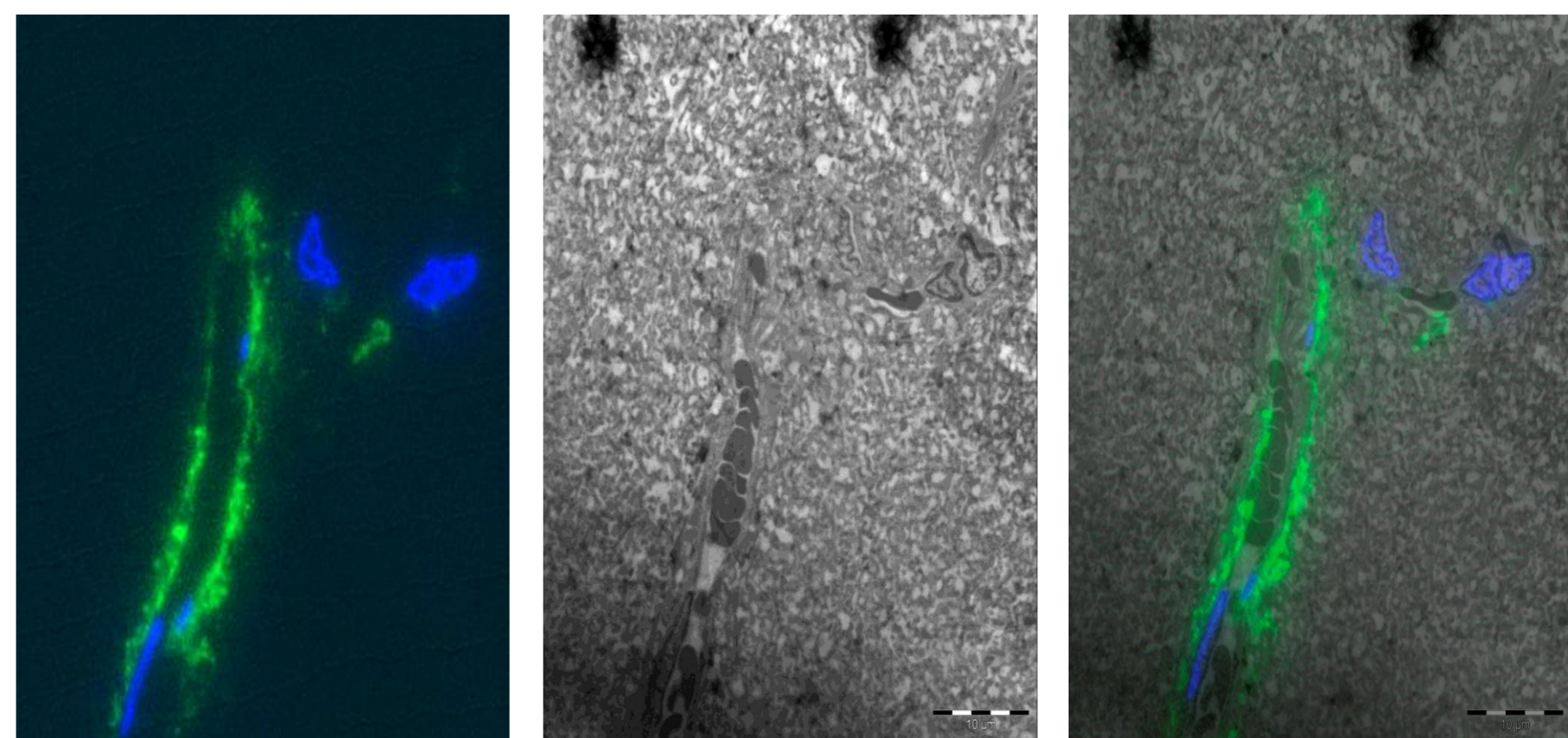
Immuno-EM:  
Mildly fixed cells and tissues with gold labeling on proteins in ultrathin sections



### CLEM (Combined Light Electron Microscopy)



CLEM: image sample in fluorescence microscopy and then image the same sample using electron microscopy to combine the images and localize fluorescence in TEM



Samples: Henk van der Veen, Carla Ribeiro, Anne van der Spek, Bea Bedussi

### Contact EMCA:

Nicole van der Wel (Head EMCA)  
[n.n.vanderwel@amc.nl](mailto:n.n.vanderwel@amc.nl)  
Meibergdreef 15  
1105 AZ Amsterdam The Netherlands  
tel: \*31 (0)20 566 4757

EMCA is part of the AMC Core facility Cellular Imaging  
Head: Eric Reits  
<http://www.lcam-amc.nl>